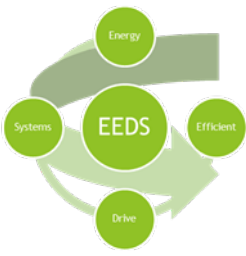


Recent Project –

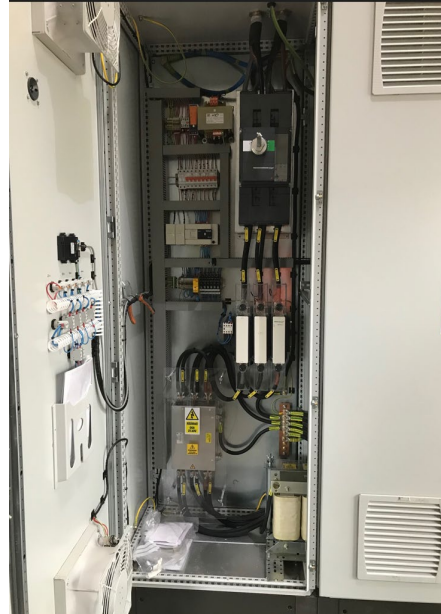
Application – Woodchipper on A CHP plant

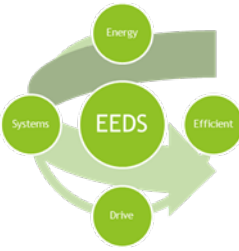
Installation - New

Motor size - 355kW 4P EX “n” motor complete with VSD , Panel & Installation



- Size , Specify & supply a new AC Motor.
- Specify VSD & Panel builder.
- Complete installation of Motor , Panel, setup & commission.
- Handover.

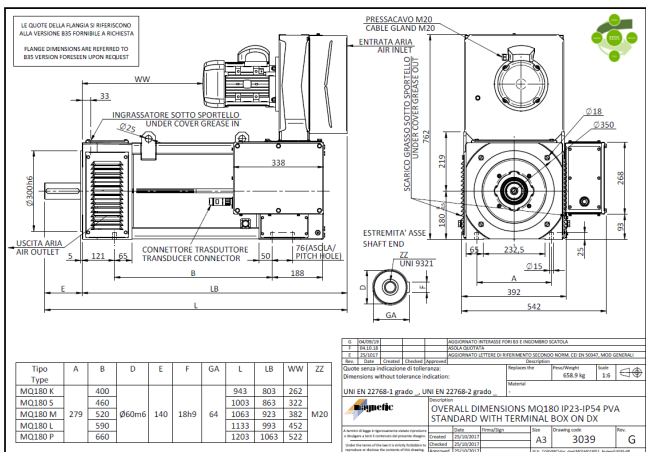
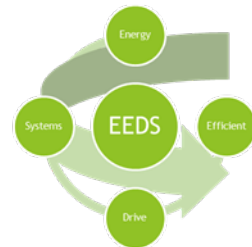




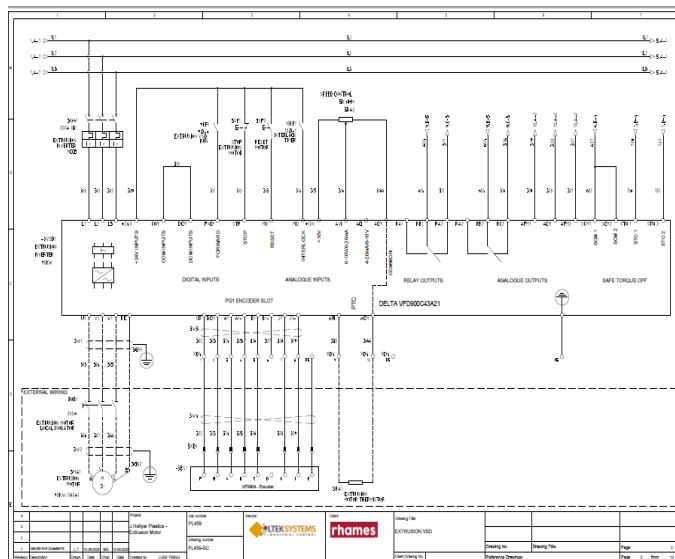
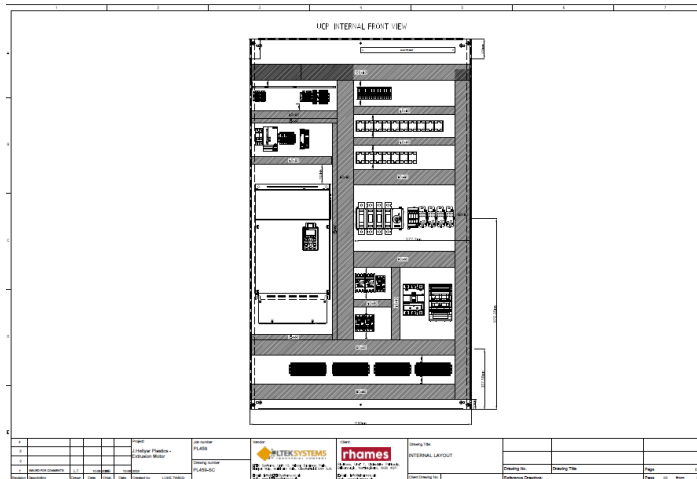
Project Management

- Motor
 - Panel
 - Logistics
 - Installation & Commissioning
- Assess requirements , Size , design , drawings – check fitting , make base plate design changes as required.
 - Size and specify VSD size , panel design , drawings and specification – sign off.
 - Manage procurement import of all major components (Motors – VSD's)
 - Specify cable , cabling routes , cable tray – installation times and planning with Installers , fabricators.

Project managementwe specified, designed and worked with our partners to provide a turnkey solution



State APPROVED - Date: 10-10-2019



Project P-438 Description 2-Heje Plastics Extrusion Line

Line	Origin	Destination	Type	Color	Size	Length	in	mm	Comments
UCP-01-M	Main UCP Extrusion Line VSD Control Panel	Extrusion Line Motor VSD - Local Inverter	X-FLP/ANALOG	RED	2x16	16	400V	0/1	Normal Speed Reference for Speed Measurement by DSI
UCP-01-M	Extrusion Line Motor VSD - Local Inverter	Extrusion Line Motor VSD - Local Inverter	X-FLP/ANALOG	RED	4	24	16	400V	0/1
UCP-01-M	Main UCP Extrusion Line VSD Control Panel	Extrusion Line Motor Cooling Fan - Local Inverter	X-FLP/ANALOG	RED	4	24	16	400V	0/1
UCP-01-M	Extrusion Line Motor Cooling Fan - Local Inverter	Extrusion Line Motor Cooling Fan - Local Inverter	X-FLP/ANALOG	RED	4	24	16	400V	0/1
UCP-01-M	Main UCP Extrusion Line VSD Control Panel	Extrusion Line Oil Lubrication Motor - Local Inverter	X-FLP/ANALOG	RED	4	24	16	400V	0/1
UCP-01-M	Main UCP Extrusion Line VSD Control Panel	Extrusion Line Oil Lubrication Motor	X-FLP/ANALOG	RED	2	24	16	400V	0/1

Motor data sheet for a Sicme Orange1 motor. It includes a table of motor parameters, a technical drawing of the motor, and a warning label. The table lists parameters such as power, speed, torque, and efficiency.

Parameter	Value
Power	1.5 kW
Speed	1400 rpm
Torque	1.1 Nm
Efficiency	85%
Power factor	0.85
Current	1.1 A
Insulation class	F
Protection class	IP54
Temperature rise	100 K
Service factor	1.1
Weight	1.5 kg
Dimensions	See drawing